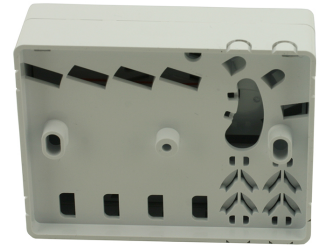
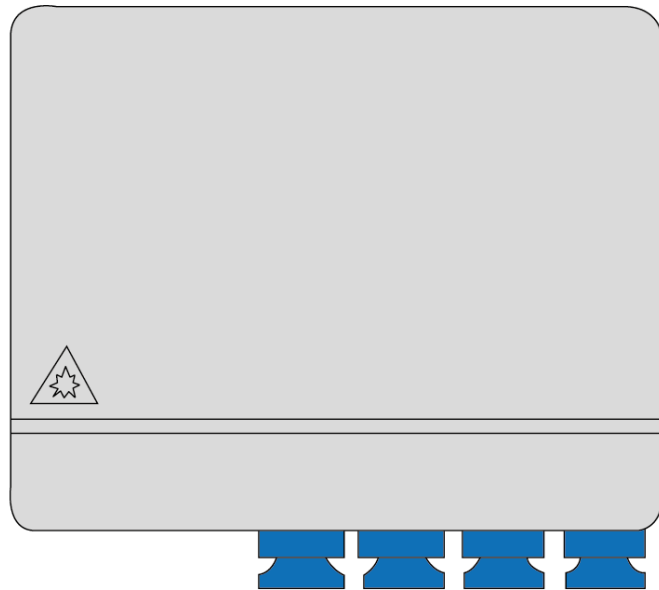


Product updated on October 09, 2017

CSB15 FTTH Customer Outlet



Item Description

The internal customer outlet box is designed for use inside the home. The box is designed to hold 4 x SC Simplex or 4 x LC duplex adapters.

Features/Benefits

- Multi cable entry points
- Integrated heatshrink splice holder
- Holds up to 8 single fibres
- for use with flangeless adapters
- Fixing screws included
- 4 x heat shrink splice protectors included
- Integrated fibre management

Applications

- FTTH

Specifications

DESCRIPTION	VALUE
Maximum Single Fibre Count	8
Maximum Number of heat splice	8
Number of outlets	4
Number of cable entre points	10
Height	80mm
Width	100mm
Depth	29mm
Weight	83 grams
Colour	White
Material	ABS
RoHS Compliant	Yes
Designed in accordance with	TIA/EIA 568.C, ISO/IEC 11801, EN 50173, IEC 60304, IEC 61754, EN 297-1

Ordering information

	DESCRIPTION	PART NUMBER
	FTTH User outlet unloaded	CSB15

**Further Information**

- For additional information please contact your sales representative
- To view the product 360 visit the product page (Scan the QR code or visit the link below)
- Downloaded from <https://www.fibrefab.com/product/csb15-ftth-customer-outlet>
- FibreFab reserves the right to make changes in this datasheet at any time without notice
- Information in this document is correct as of October 09, 2017

SCAN QR FOR PRODUCT PAGE

Europe

+44 (0) 1908 441 144
sales@fibrefab.com
© FibreFab 2017

Americas

+1 800 790 9932
sales@fiberfabinc.com

Middle East & Africa

+971 4 404 9606
mesales@fibrefab.com

Asia Pacific

+86 755 2561 3694
asia@fibrefab.com